



BASEMAPS >

+ Measure

LEGEND

MAP LAYERS

- ☒ Wetlands
- ☐ Riparian
- ☐ Riparian Mapping Areas
- ☐ Data Source
  - ☒ Source Type
  - ☐ Image Scale
  - ☐ Image Year
- ☒ Areas of Interest
- ☐ FWS Managed Lands
- ☐ Historic Wetland Data

General

Description

Reports

About

This **0.77** acre **Riverine** habitat is classified as a **R4SBC**. For a complete code description, click [here](#).

The wetlands and deepwater habitats in this area were photo interpreted using **1:58,000** scale, **color infrared** imagery from **1981**.

[Zoom to wetland](#)

[Zoom to project area](#)

OUR HOME





BASEMAPS >

MAP LAYERS >

- ☒ Wetlands 1 ?
- ☐ Riparian 1 ?
- ☐ Riparian Mapping Areas 1 ?
- ☐ Data Source 1 ?
  - ☒ Source Type
  - ☐ Image Scale
  - ☐ Image Year
- ☒ Areas of Interest ?
- ☐ FWS Managed Lands 1 ?
- ☐ Historic Wetland Data 1 ?

**PROPOSED AGGREGATE  
MINING SITE**

**ATTACHMENT #3**








BASEMAPS >

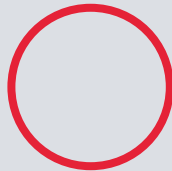
MAP LAYERS >

- ☒ Wetlands ⓘ ⓘ
- ☐ Riparian ⓘ ⓘ
- ☐ Riparian Mapping Areas ⓘ ⓘ
- ☐ Data Source ⓘ ⓘ
  - ☒ Source Type
  - ☐ Image Scale
  - ☐ Image Year
- ☒ Areas of Interest ⓘ
- ☐ FWS Managed Lands ⓘ ⓘ
- ☐ Historic Wetland Data ⓘ ⓘ

**PROPOSED  
AGGREGATE  
MINING SITE**



**HOMES WITHIN  
1500FT (MOST  
BORDERING)**

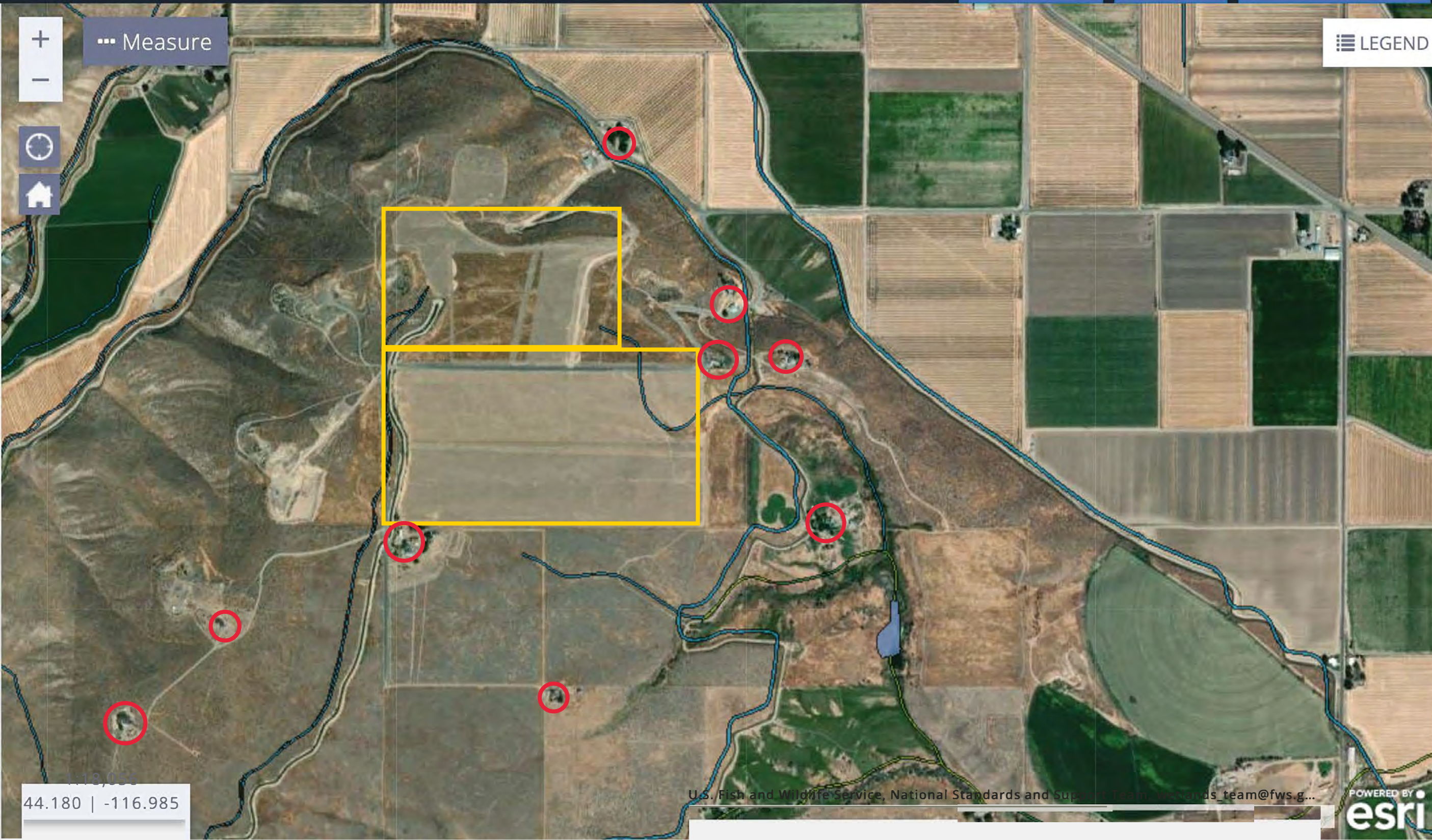


ATTACHMENT #4



Measure

LEGEND







COMPASS

Search the Map

DATA ACTIVE TOOLS LEGEND

FLOWING WATER AND RIPARIAN HABITATS

Grasslands Strategy Habitat

Grasslands

ESTUARIES

Flowing Water and Riparian Strategy Habitat

Flowing Water and Riparian

WETLANDS

Wetlands Strategy Habitat

Wetlands

Riparian Area

Proposed Aggregate Mining Site

Riparian Corridor

Wetland

Riparian Corridor

ATTACHMENT #5

Tutorial



the OREGON CONSERVATION STRATEGY



Sources: Esri, i-cubeo, USDA, USGS, AEX, GeoEye, Getmapping, Aerogrid, IGN, IGP, LPR-EGP and others, ODFW

0 0.1 0.2 MILES

41°F Mostly sunny 4:29 PM 1/4/2024





COMPASS

Search the Map



DATA ACTIVE TOOLS LEGEND

ODFW DEER WINTER RANGE (EASTERN OR)

ODFW Deer Winter Range

ODFW Deer Winter Range

ATTACHMENT #6

Tutorial



the OREGON CONSERVATION STRATEGY



Sources: Esri, I-cubed, USDA, USGS, AEX, GeoEye, Getmapping, Aerogrid, IGN, IGP, UPR-EGP, and others, ODFW

0 0.1 0.2 MILES

Type here to search



41°F Mostly sunny

4:32 PM 1/4/2024