



- Home
- About Us ▾
- Common School Fund
- Land Board ▾
- Newsroom ▾
- Laws & Rules ▾
- Ocean Science Trust
- Projects
- Contact DSL ▾

**What is a wetland?**

Wetlands are called by many different names and occur in an array of landscapes. Oregon has many wetland types that range from tidal salt marshes along the coast to fresh water marshes along streams and ponds, seasonal prairie and meadow wetlands in the valleys to mossy mountain fens. Wetlands may form at the edges of lakes, rivers and streams, in low isolated spots on the landscape, and where groundwater comes to the surface via seeps or during winter rains. Despite the wide variety of wetland types, three features are common to all:

- The presence of water at or just below the surface of the land for at least a portion of the year,
- Soils that developed under saturated (wet) conditions, and
- Distinctive plants that are uniquely adapted to seasonal or year-round saturated (wet) soils

Prolonged saturation creates a wetland, no matter the water source. A high seasonal or permanent water table, rainwater "perched" over impermeable layers in the soil, and frequent flooding are common examples. Wetland – or hydric – soils usually have distinctive, visible characteristics, such as brownish-red veining and rusty-colored splotches. Saturated conditions support plants that have adapted to life in permanently or seasonally wet soils.

Wetlands in Oregon provides an overview of how to identify wetlands.

**Are there wetlands on my property?**

Identifying wetlands is often difficult, as many wetlands do not appear obviously wet or they are only seasonally wet. In addition, many wetland landscapes have been altered over time by activities such as farming, and no longer "look like"

# Exhibit B



478 Jasmine road Ontario Oregon



February 20, 2024

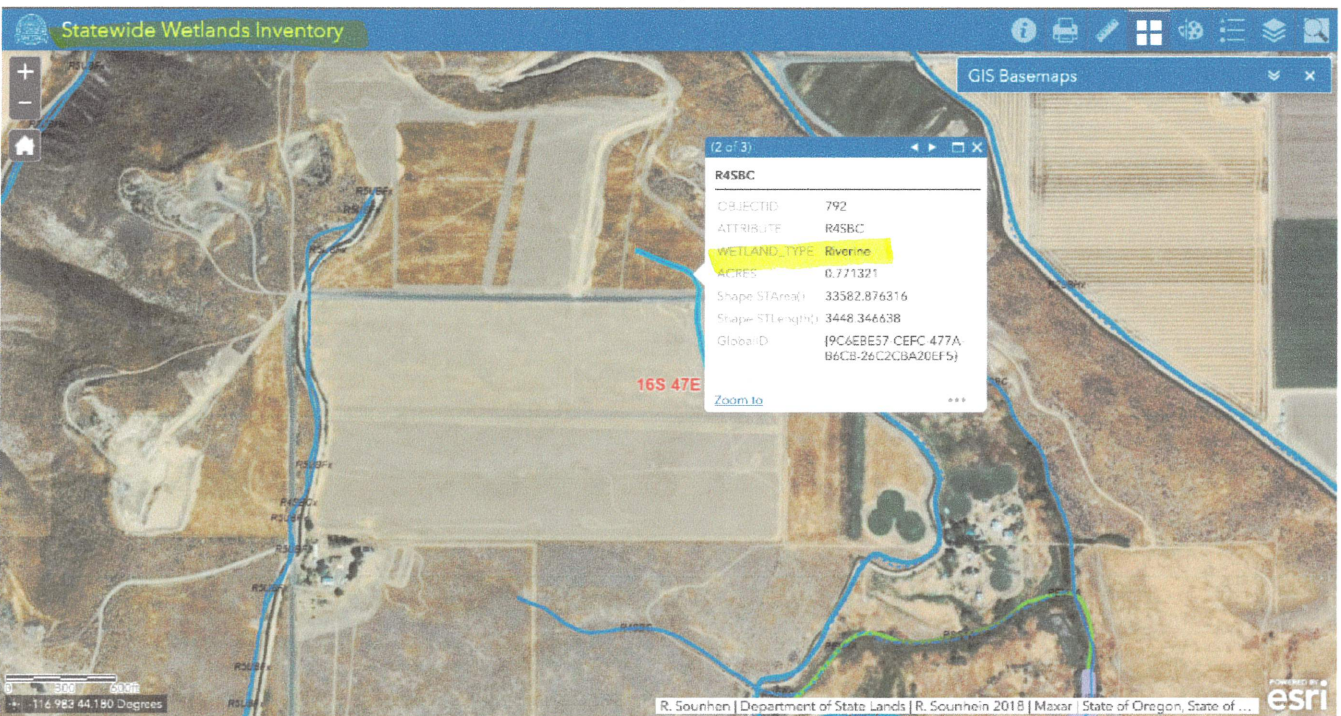
### Wetlands

- |                                |                                   |          |
|--------------------------------|-----------------------------------|----------|
| Estuarine and Marine Deepwater | Freshwater Emergent Wetland       | Lake     |
| Estuarine and Marine Wetland   | Freshwater Forested/Shrub Wetland | Other    |
|                                | Freshwater Pond                   | Riverine |

This map is for general reference only. The US Fish and Wildlife Service is not responsible for the accuracy or currentness of the base data shown on this map. All wetlands related data should be used in accordance with the layer metadata found on the Wetlands Mapper web site.

National Wetlands Inventory (NWI)  
This page was produced by the NWI mapper

# Exhibit B-Cont.



# National Wetlands Inventory

surface waters and wetlands

ABOUT

GET DATA

PRINT

FIND LOCATION

BASEMAPS >

MAP LAYERS >

- Wetlands 1 2
- Riparian 1 2
- Riparian Mapping Areas 1 2
- Data Source 1 2
- Source Type
- Image Scale
- Image Year
- Areas of Interest 2
- FWS Managed Lands 1 2
- Historic Wetland Data 1 2

+ -

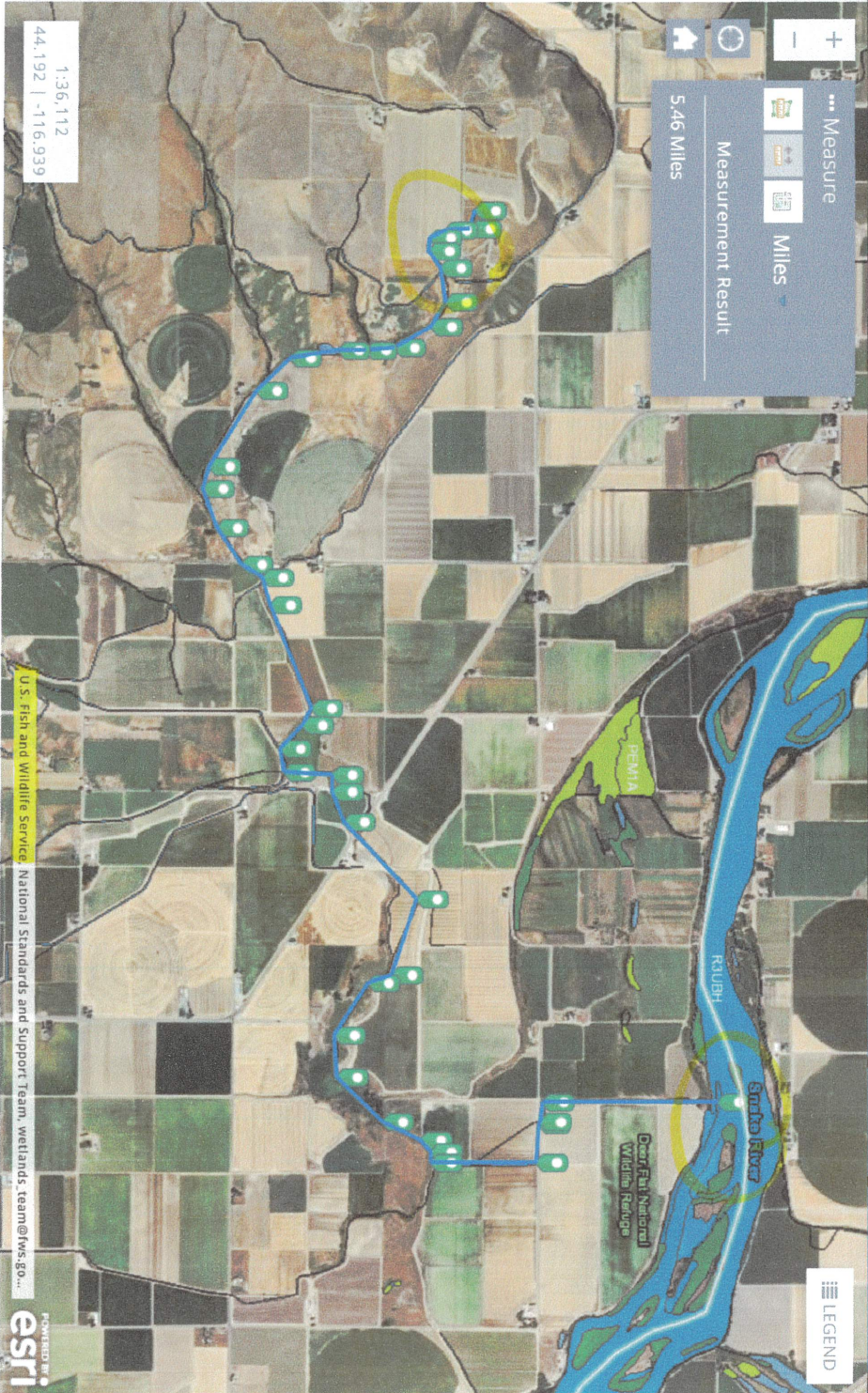
Measure

Miles

Measurement Result

5.46 Miles

LEGEND



1:36,112  
44.192 | -116.939

U.S. Fish and Wildlife Service, National Standards and Support Team, wetlands\_team@fws.gov...



Exhibit C

# COMPASS

478 jasmine rd



DATA ACTIVE TOOLS LEGEND

## FLOWING WATER AND RIPARIAN HABITATS

- Flowing Water and Riparian Strategy Habitat
- Flowing Water and Riparian

Tutorial



Sources: Esri, i-cubed, USDA, USGS, AEX, GeoEye, Getmapping, Aerogrid, IGN, IGP, UPR-EGP, and others, ODFW



## Exhibit D

2/21/24, 10:47 AM

Yahoo Mail - Follow up Congressional Inquiry

### Follow up Congressional Inquiry

From: Office of Congressman Cliff Bentz (or02cb.districtservices@mail.house.gov)

To: dentkingoforegon@yahoo.com

Date: Tuesday, February 20, 2024 at 01:18 PM MST



Congressman

**CLIFF BENTZ**

Representing the 2nd District of Oregon

February 20, 2024

Dear Ms. Cassity,

I am writing to follow up with you regarding my inquiry on your behalf with the US Department of Interior (DOI).

Although the DOI has not completed its review of your case, I will continue to work with the DOI to bring about a resolution to this matter. When I receive additional information on your case, I will contact you.

Thank you for your continued patience. Should you have any questions or additional information please feel free to contact me at my district office in Medford, Oregon.

Sincerely,

A handwritten signature in blue ink that reads "Cliff".

Cliff Bentz  
Member of Congress

14 N. Central Avenue, Suite 112  
Medford, OR 97501