

OVERVIEW MAP: ArcGIS Aerial View of Property

19s 46e 27; Tax Lot 700; Reference # 9563

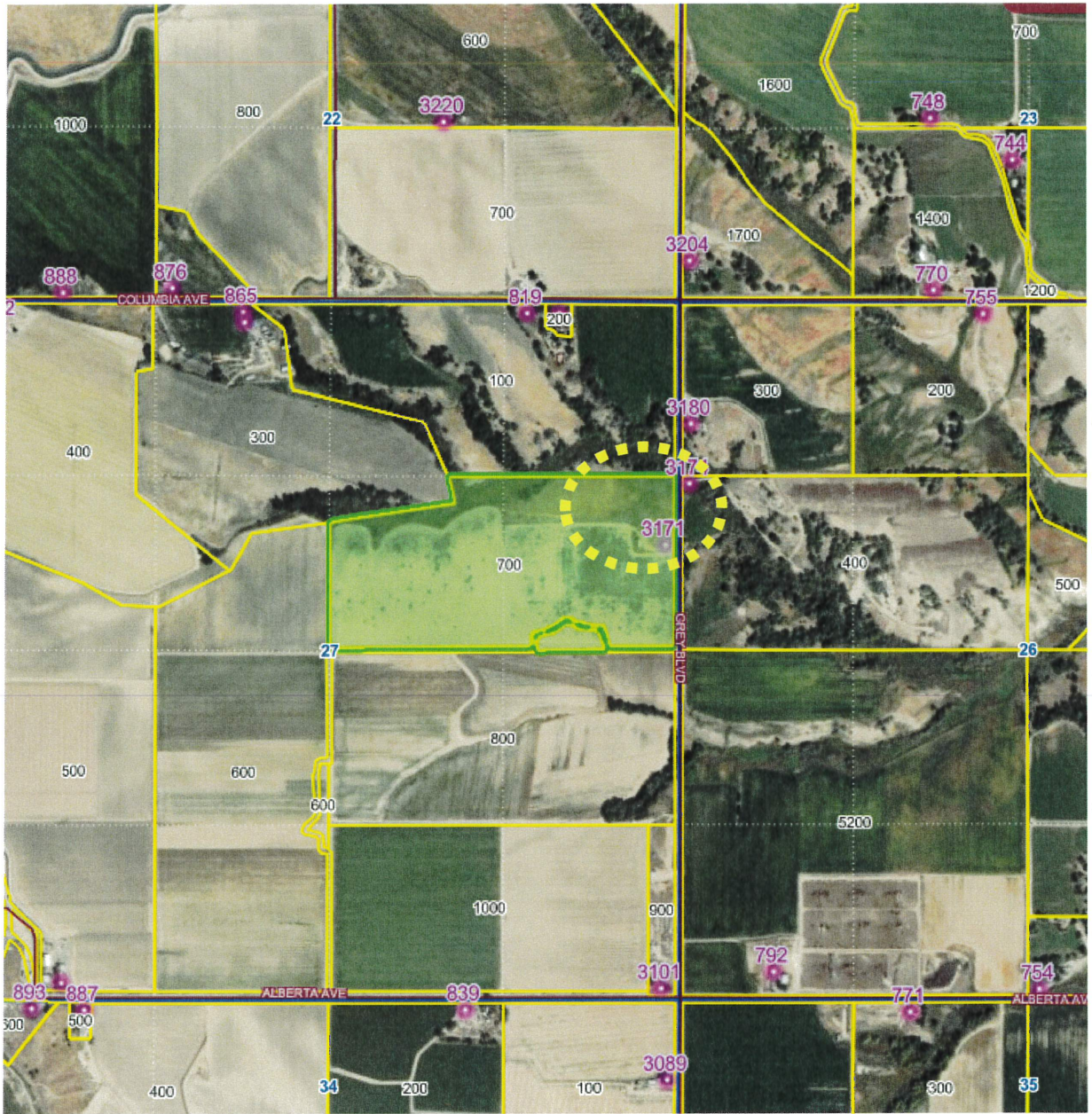
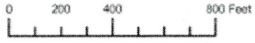
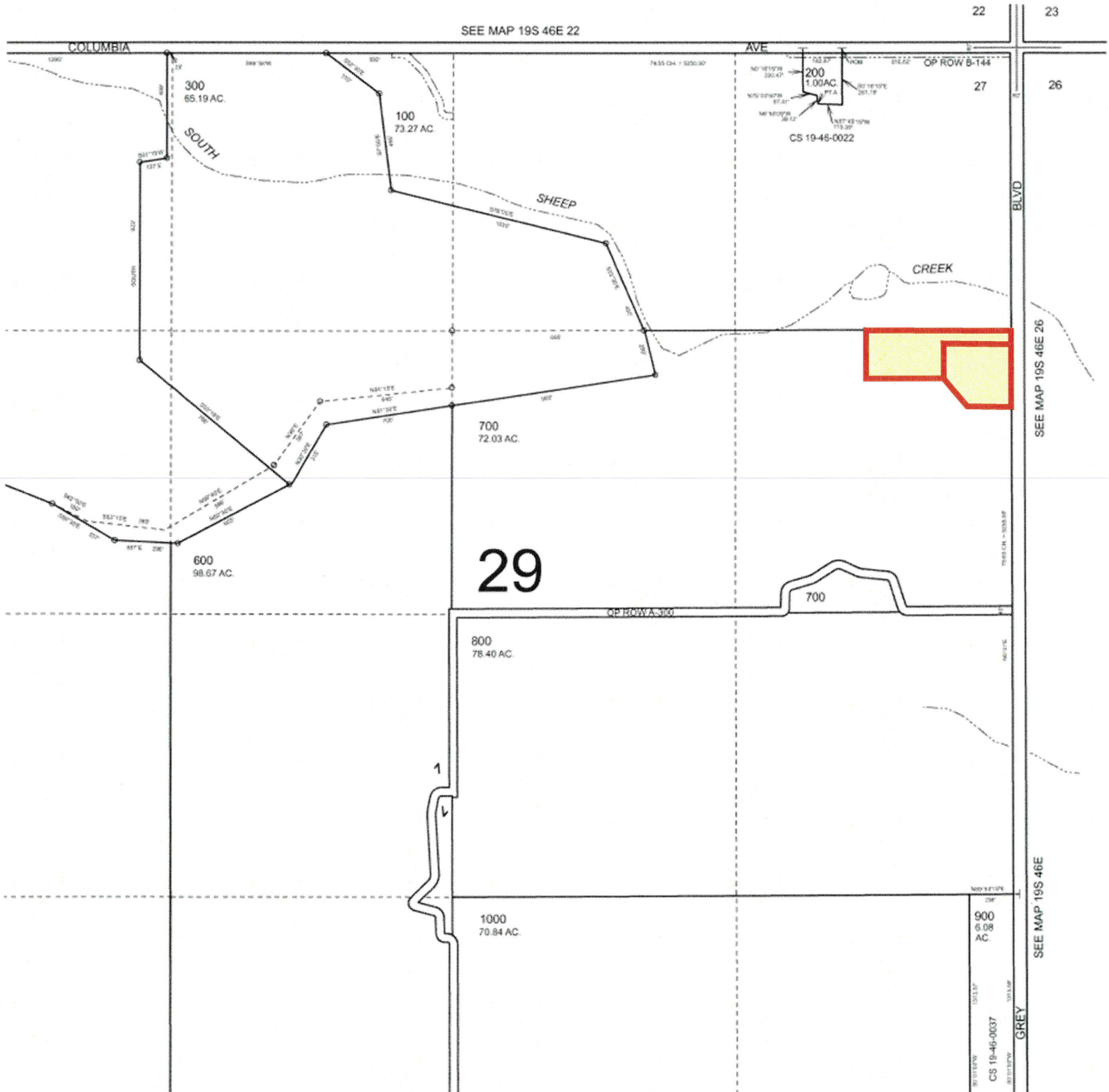


EXHIBIT # 4

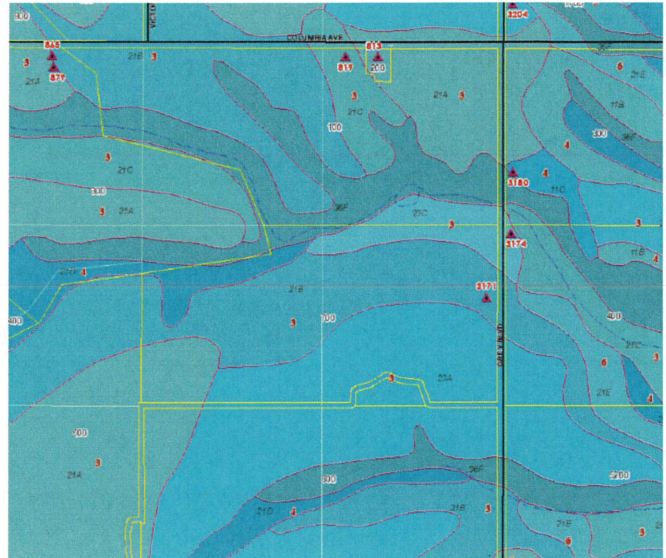
Malheur County Assessor's Office DOR Township Map: **Two BRH Parcels Proposed**



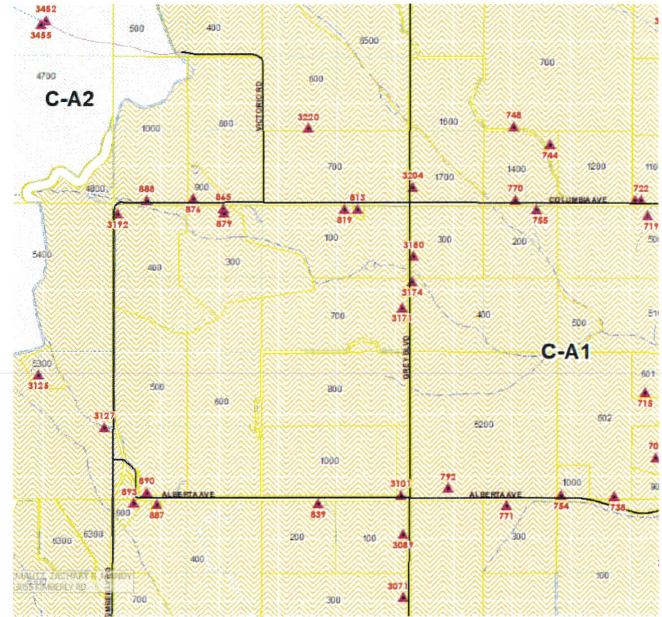
SECTION 27 T.19S. R.46E. W.M.  
MALHEUR COUNTY  
1" = 400'



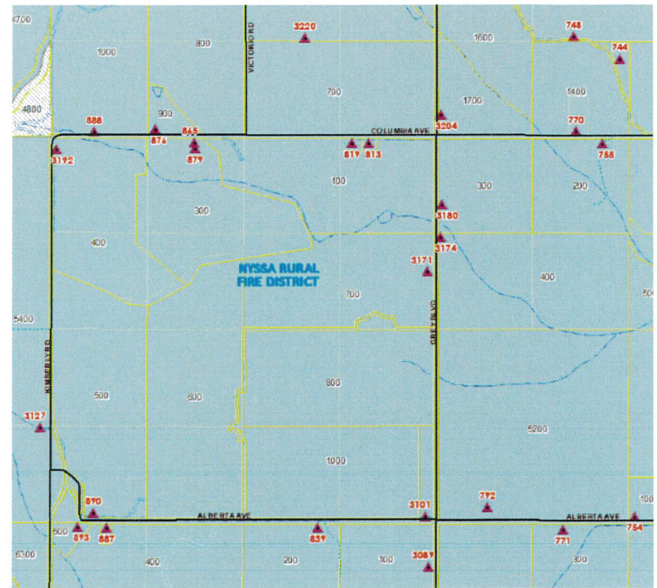
Soils Categories of Surrounding Properties:



Zoning Map of surrounding Properties:



Map of Rural Fire District:



Aerial View of Farming Activity – Year One:



Aerial View of Farming Activity – Year Two:



Aerial View of Farming Activity – Year Three:



## **Soils Classification**

### **21B—Nyssa silt loam**

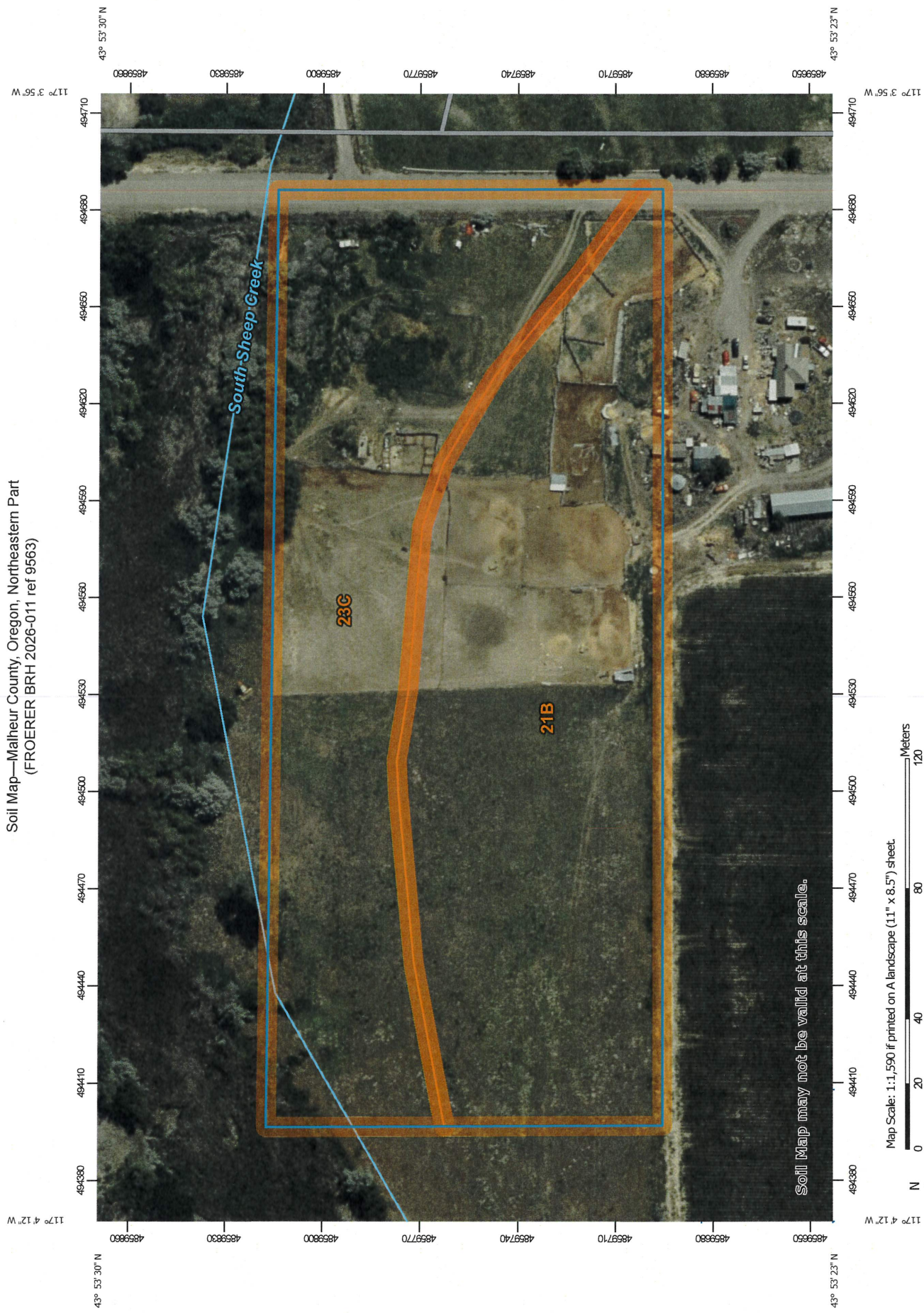
Interpretive groups: Land capability classification (irrigated): 4s (non-irrigated): 6c

### **23C—Nyssa Malheur silt loams**

Interpretive groups: Land capability classification (irrigated): 4e (non-irrigated): 6c

---

Soil Map—Malheur County, Oregon, Northeastern Part  
(FROERER BRH 2026-011 ref 9563)



Soil Map may not be valid at this scale.

Map Scale: 1:1,590 if printed on A landscape (11" x 8.5") sheet.

Map projection: Web Mercator Corner coordinates: WGS84 Edge tics: UTM Zone 11N WGS84



Natural Resources  
Conservation Service

## Map Unit Legend

Map Unit Symbol	Map Unit Name	Acres in AOI	Percent of AOI
21B	Nyssa silt loam, 2 to 5 percent slopes	4.7	54.0%
23C	Nyssa-Malheur silt loams, 5 to 8 percent slopes	4.0	46.0%
<b>Totals for Area of Interest</b>		<b>8.6</b>	<b>100.0%</b>



Find address or place



### FROERER FAM LTD PARTNERSHIP



Zoom to

ADD2	3150 ECHO RD
CITYSTATE	NYSSA, OR
ZIP	97913
REF	9563
MapNumber	19546E27
Taxlot	700
MapTaxlot	19546E2700700
Assessors	<a href="#">View</a>
ORMap	<a href="#">View</a>
SetInfo	<a href="#">View</a>
SITUSADD	3171 GREY BLVD
CITY	NYSSA
TCA	29
ZONING	CA1
TOTACRE	72.03
LOTSF	0.00
TAXES	1429
BCL	121
YRBL	1936
BLDSF	1304



Query

