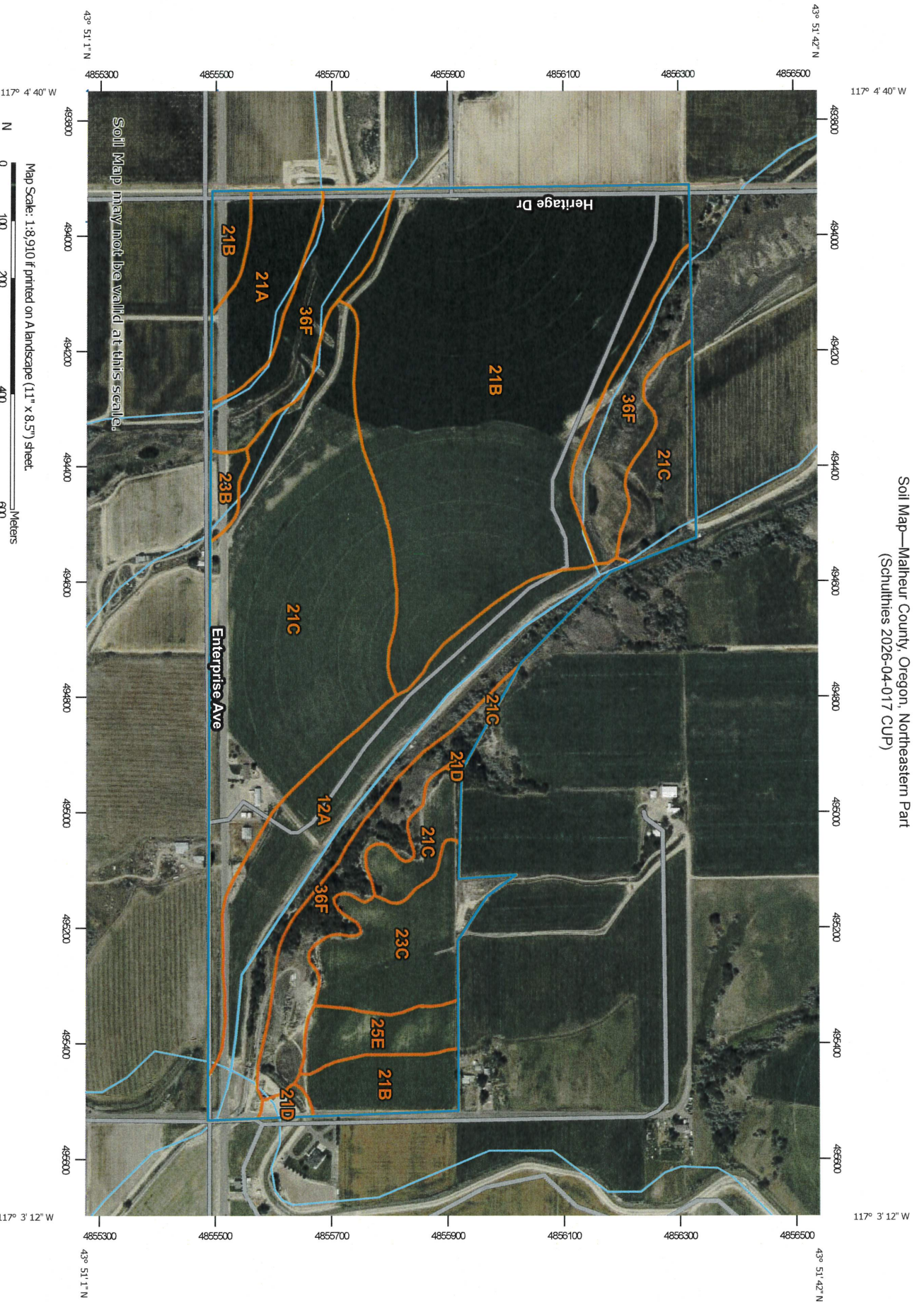


Soil Map—Malheur County, Oregon, Northeastern Part
(Schulthies 2026-04-017 CUP)



Map Unit Legend

Map Unit Symbol		Map Unit Name	Acres in AOI	Percent of AOI
12A	Class 1 (irrigated) Class 6 (non)	Garbutt silt loam, 0 to 2 percent slopes	30.9	12.5%
21A	Class 4 (irrigated) Class 6 (non)	Nyssa silt loam, 0 to 2 percent slopes	9.4	3.8%
21B	Class 4 (irrigated) Class 6 (non)	Nyssa silt loam, 2 to 5 percent slopes	88.0	35.5%
21C	Class 3 (irrigated) Class 6 (non)	Nyssa silt loam, 5 to 8 percent slopes	64.7	26.1%
21D	Class 4 (irrigated) Class 6 (non)	Nyssa silt loam, 8 to 12 percent slopes	1.0	0.4%
23B	Class 4 (irrigated) Class 6 (non)	Nyssa-Malheur silt loams, 2 to 5 percent slopes	1.8	0.7%
23C	Class 3 (irrigated) Class 6 (non)	Nyssa-Malheur silt loams, 5 to 8 percent slopes	12.9	5.2%
25E	Class 6 (irrigated) Class 6 (non)	Owyhee silt loam, 12 to 20 percent slopes	5.5	2.2%
36F	Class 7	Xeric Torriorthents, very steep	33.8	13.6%
Totals for Area of Interest			248.1	100.0%