

OVERVIEW MAP: ArcGIS Aerial View of Property

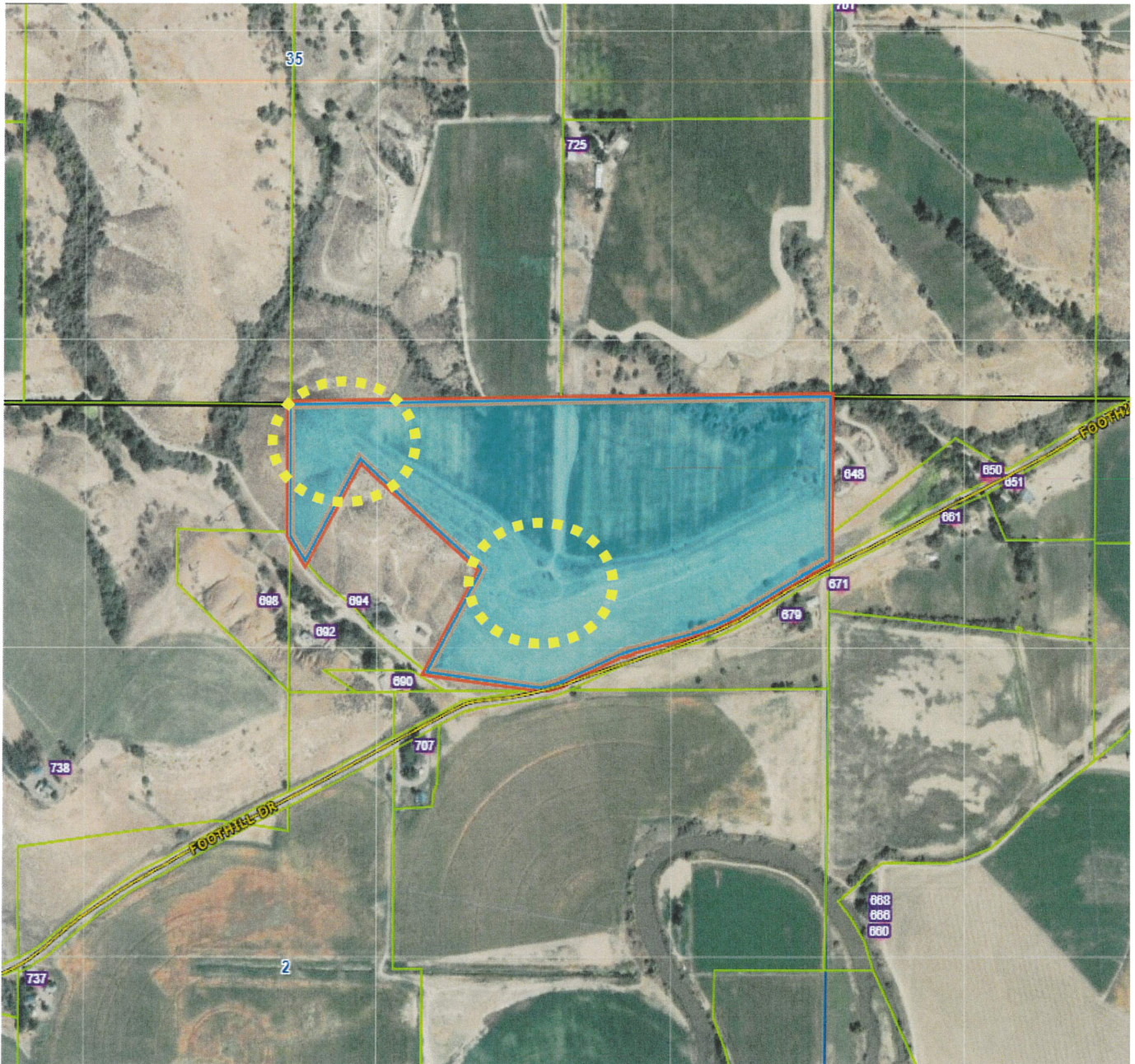


EXHIBIT # 4

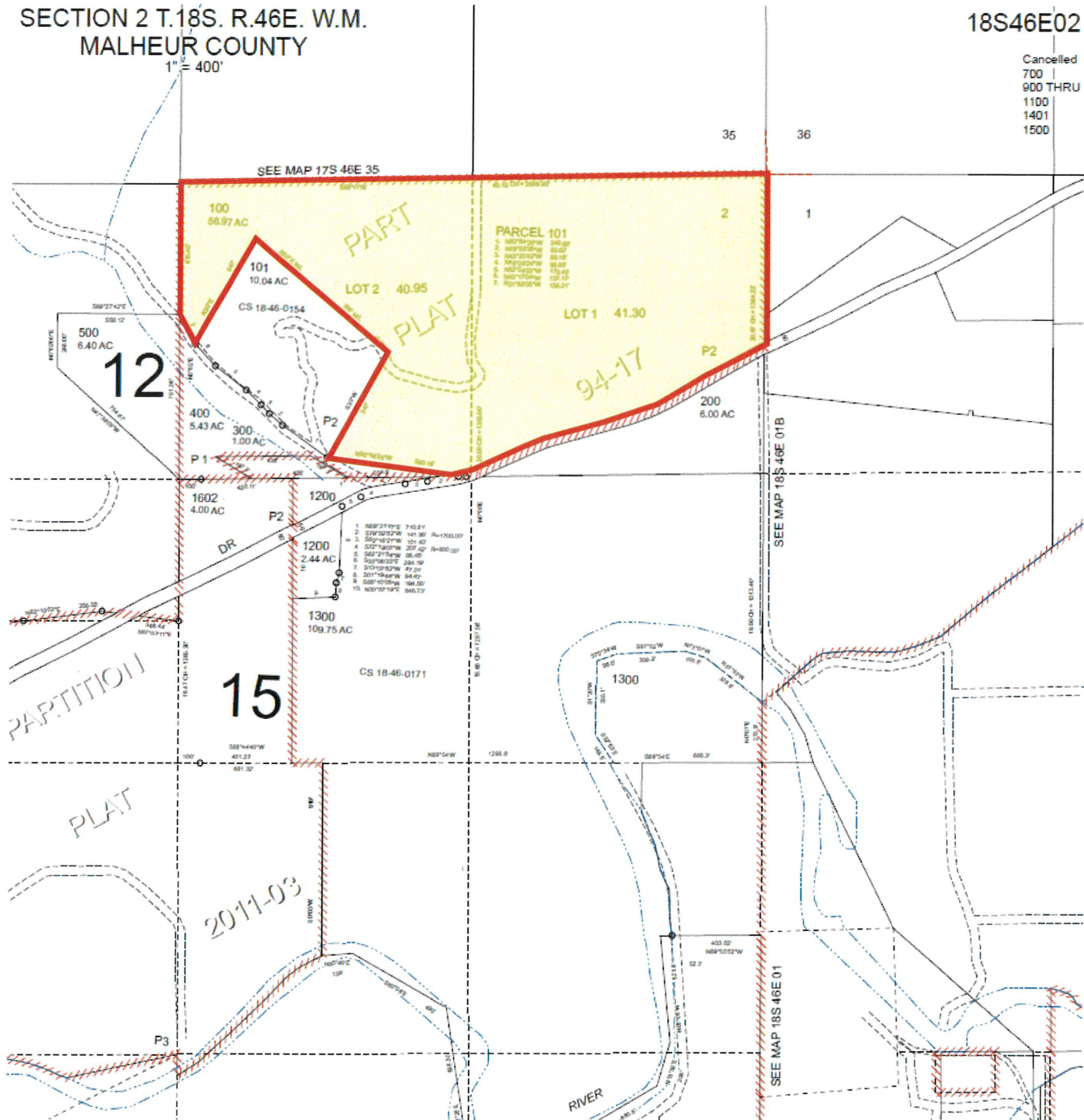
Malheur County Assessor's Office DOR Township Map:

SECTION 2 T.18S. R.46E. W.M.
MALHEUR COUNTY

18S46E02

Cancelled
700
900 THRU
1100
1401
1500

1" = 400'



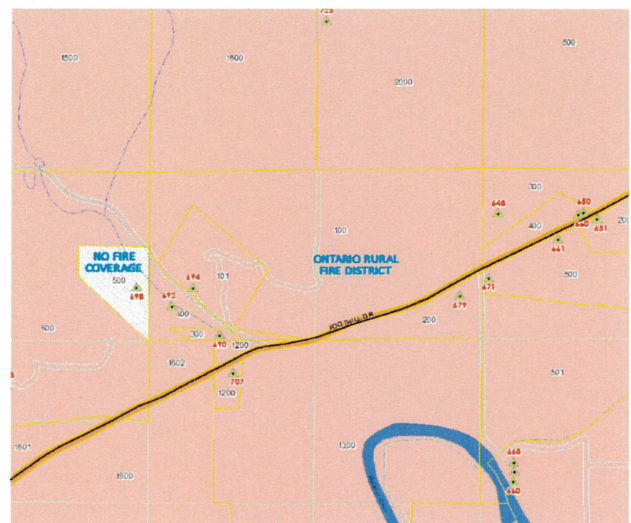
Soils Categories of Surrounding Properties:



Zoning Map of surrounding Properties:



Map of Rural Fire District:



Aerial View of Farming Activity – Year One:



Aerial View of Farming Activity – Year Two:



Aerial View of Farming Activity – Year Three:



