

**Soils Classification**

**21A—Nyssa silt loam**

Interpretive groups: Land capability classification (irrigated): 4s (non-irrigated): 6c

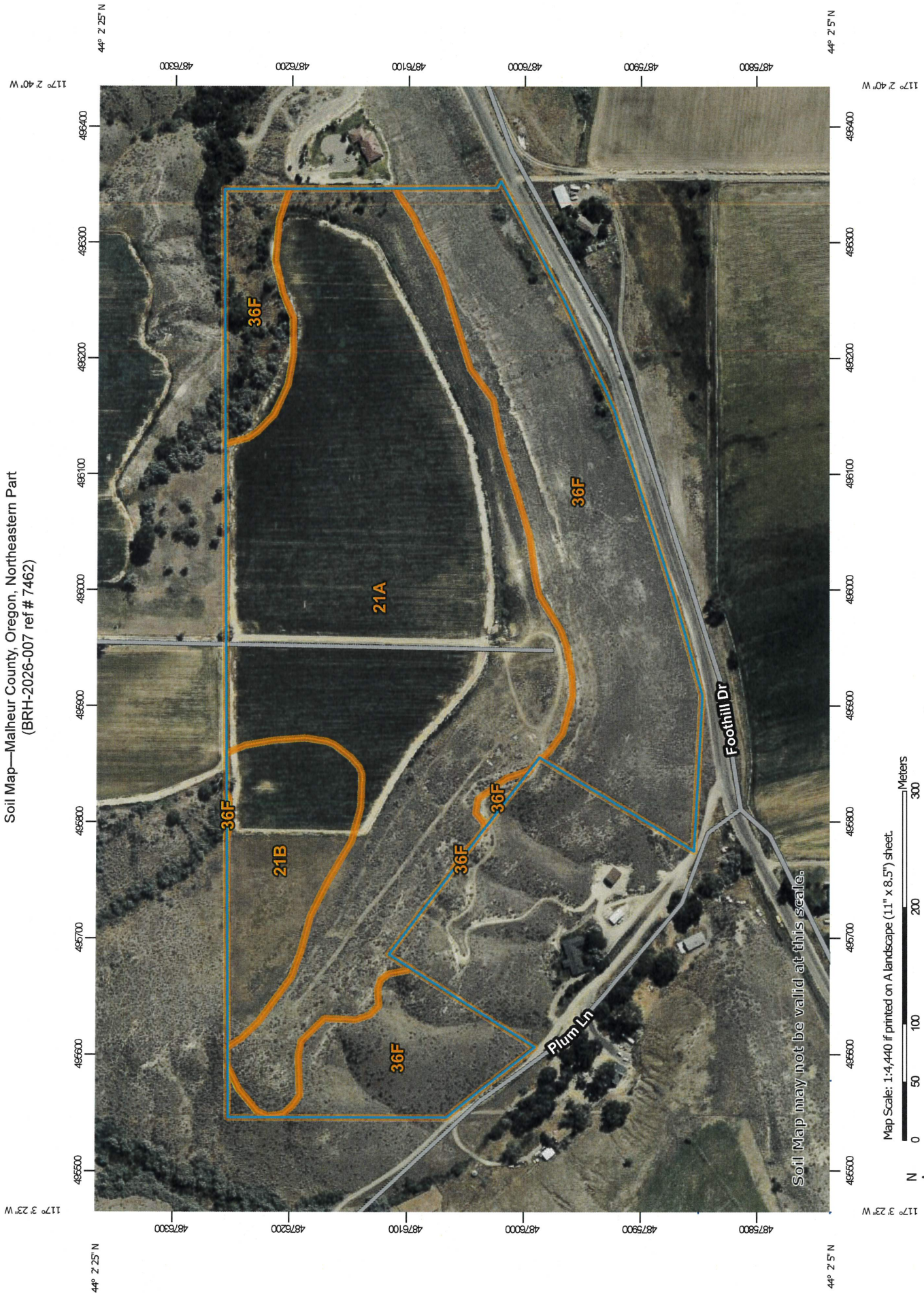
**21B—Nyssa silt loam**

Interpretive groups: Land capability classification (irrigated): 4s (non-irrigated): 6c

**36F—Xeric Torriorthents**

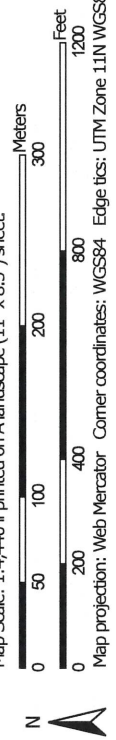
Interpretive groups: Land capability classification: 7s

Soil Map—Malheur County, Oregon, Northeastern Part  
(BRH-2026-007 ref # 7462)



Soil Map may not be valid at this scale.

Map Scale: 1:4,440 if printed on A landscape (11" x 8.5") sheet.  
 Map projection: Web Mercator Corner coordinates: WGS84 Edge tics: UTM Zone 11N WGS84



Natural Resources  
Conservation Service

Web Soil Survey  
National Cooperative Soil Survey



## Map Unit Legend

Map Unit Symbol	Map Unit Name	Acres in AOI	Percent of AOI
21A	Nyssa silt loam, 0 to 2 percent slopes	32.7	55.2%
21B	Nyssa silt loam, 2 to 5 percent slopes	5.1	8.5%
36F	Xeric Torriorthents, very steep	21.4	36.2%
Totals for Area of Interest		59.2	100.0%