

Soils Classification

11B—Frohman silt loam

Interpretive groups: Land capability classification (irrigated): 6e (non-irrigated): 6c

11D—Frohman silt loam

Interpretive groups: Land capability classification (irrigated): 6e (non-irrigated): 6c

11D—Frohman silt loam

Interpretive groups: Land capability classification (irrigated): 6e (non-irrigated): 6c

21A—Nyssa silt loam

Interpretive groups: Land capability classification (irrigated): 4s (non-irrigated): 6c

21B—Nyssa silt loam

Interpretive groups: Land capability classification (irrigated): 4s (non-irrigated): 6c

21C—Nyssa silt loam

Interpretive groups: Land capability classification (irrigated): 3e (non-irrigated): 6c

21E—Nyssa silt loam

Interpretive groups: Land capability classification (irrigated): 6e (non-irrigated): 6c

25E—Owyhee silt loam

Interpretive groups: Land capability classification (irrigated): 6e (non-irrigated): 6c

33A—Turbyfill fine sandy loam

Interpretive groups: Land capability classification (irrigated): 1 (non-irrigated): 6c

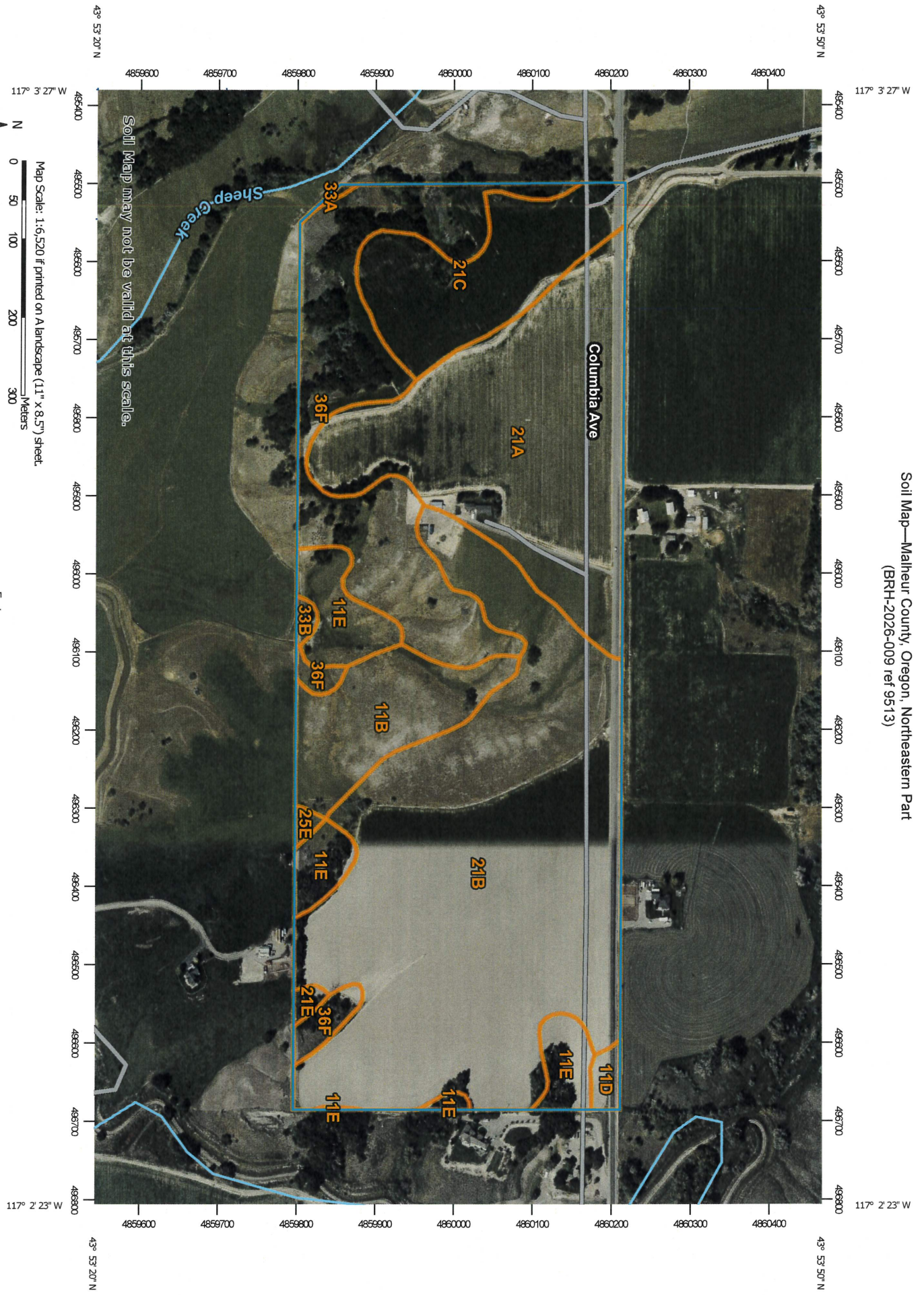
33B—Turbyfill fine sandy loam

Interpretive groups: Land capability classification (irrigated): 2e (non-irrigated): 6c

36F—Xeric Torriorthents

Interpretive groups: Land capability classification: 7s

Soil Map—Malheur County, Oregon, Northeastern Part
(BRH-2026-009 ref 9513)



Map Scale: 1:6,520 if printed on A landscape (11" x 8.5") sheet.
0 50 100 200 300 Meters
0 300 600 1200 1800 Feet

Map projection: Web Mercator Corner coordinates: WGS84 Edge tics: UTM Zone 11N WGS84

MAP LEGEND

	Area of Interest (AOI)		Spoil Area
	Area of Interest (AOI)		Stony Spot
	Soils		Very Stony Spot
	Soil Map Unit Polygons		Wet Spot
	Soil Map Unit Lines		Other
	Soil Map Unit Points		Special Line Features
	Special Point Features		Water Features
	Blowout		Streams and Canals
	Borrow Pit		Transportation
	Clay Spot		Rails
	Closed Depression		Interstate Highways
	Gravel Pit		US Routes
	Gravelly Spot		Major Roads
	Landfill		Local Roads
	Lava Flow		Background
	Marsh or swamp		Aerial Photography
	Mine or Quarry		
	Miscellaneous Water		
	Perennial Water		
	Rock Outcrop		
	Saline Spot		
	Sandy Spot		
	Severely Eroded Spot		
	Sinkhole		
	Slide or Slip		
	Sodic Spot		

MAP INFORMATION

The soil surveys that comprise your AOI were mapped at 1:20,000.

Warning: Soil Map may not be valid at this scale.

Enlargement of maps beyond the scale of mapping can cause misunderstanding of the detail of mapping and accuracy of soil line placement. The maps do not show the small areas of contrasting soils that could have been shown at a more detailed scale.

Please rely on the bar scale on each map sheet for map measurements.

Source of Map: Natural Resources Conservation Service
Web Soil Survey URL:
Coordinate System: Web Mercator (EPSG:3857)

Maps from the Web Soil Survey are based on the Web Mercator projection, which preserves direction and shape but distorts distance and area. A projection that preserves area, such as the Albers equal-area conic projection, should be used if more accurate calculations of distance or area are required.

This product is generated from the USDA-NRCS certified data as of the version date(s) listed below.

Soil Survey Area: Malheur County, Oregon, Northeastern Part
Survey Area Data: Version 21, Sep 10, 2025

Soil map units are labeled (as space allows) for map scales 1:50,000 or larger.

Date(s) aerial images were photographed: May 9, 2020—Sep 14, 2023

The orthophoto or other base map on which the soil lines were compiled and digitized probably differs from the background imagery displayed on these maps. As a result, some minor shifting of map unit boundaries may be evident.

Map Unit Legend

Map Unit Symbol	Map Unit Name	Acres in AOI	Percent of AOI
11B	Frohman silt loam, 2 to 5 percent slopes	7.8	6.4%
11D	Frohman silt loam, 8 to 12 percent slopes	0.7	0.6%
11E	Frohman silt loam, 12 to 20 percent slopes	6.7	5.5%
21A	Nyssa silt loam, 0 to 2 percent slopes	25.9	21.3%
21B	Nyssa silt loam, 2 to 5 percent slopes	49.5	40.6%
21C	Nyssa silt loam, 5 to 8 percent slopes	10.6	8.7%
21E	Nyssa silt loam, 12 to 20 percent slopes	0.3	0.3%
25E	Owyhee silt loam, 12 to 20 percent slopes	0.3	0.2%
33A	Turbyfill fine sandy loam, 0 to 2 percent slopes	0.1	0.1%
33B	Turbyfill fine sandy loam, 2 to 5 percent slopes	0.3	0.3%
36F	Xeric Torriorthents, very steep	19.7	16.1%
Totals for Area of Interest		121.9	100.0%

